

RHEOLOGICAL ADDITIVE FOR LOW POLARITY SYSTEMS

Crayvallac® LA-250 is a liquid rheological additive which is designed for low polarity formulations.

- ✦ **Easy to use** due to liquid form and low viscosity
- ✦ **Post-addition** for final viscosity adjustment
- ✦ **NMP-free** and non labelled additive

Based on a modified urea chemistry **Crayvallac® LA-250** has been successfully designed for many systems **with a low to medium polarity range** (mineral spirits for example).

Its active content of 45% allows **lower levels of addition**.

Crayvallac® LA-250 is mainly used in:

- ✦ Decorative, DIY and professionals
- ✦ General industry
- ✦ UV systems
- ✦ Industrial wood finishes

Crayvallac® LA-250 interacts directly with the continuous phase to provide a thixotropic behavior. One of its advantage is its wide efficiency: it is independent on the binder chemistry (acrylics, alkyds, thermoplastics, acrylate monomers...).

Key benefits:

CRAYVALLAC® LA-250
BY ARKEMA

Easy
incorporation
Post
addition

Anti-settling
& stability

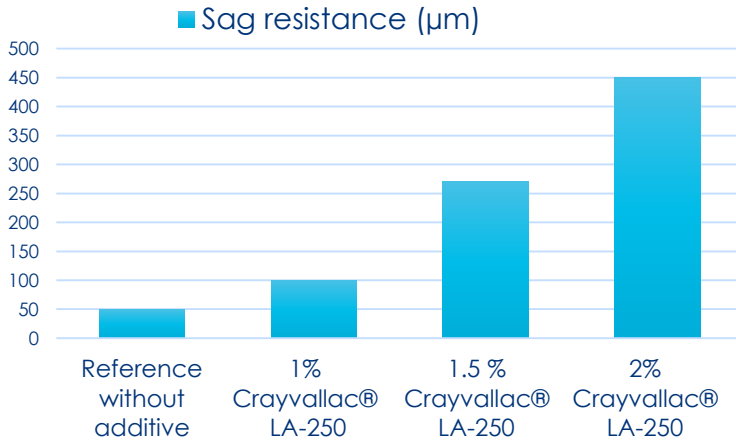
Sag
resistance

Brush
& spray
application



Rheology Modifier designed for Demanding Low Polarity Systems

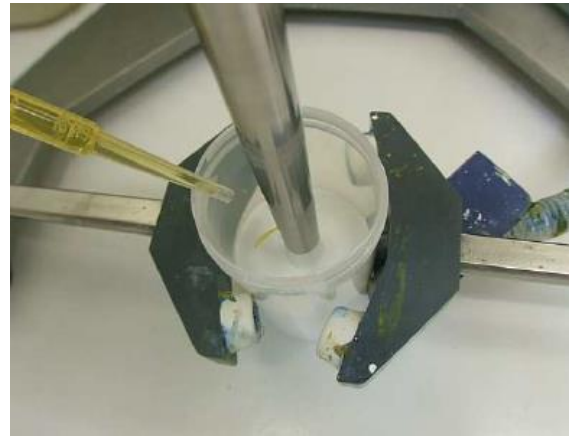
Sag resistance...



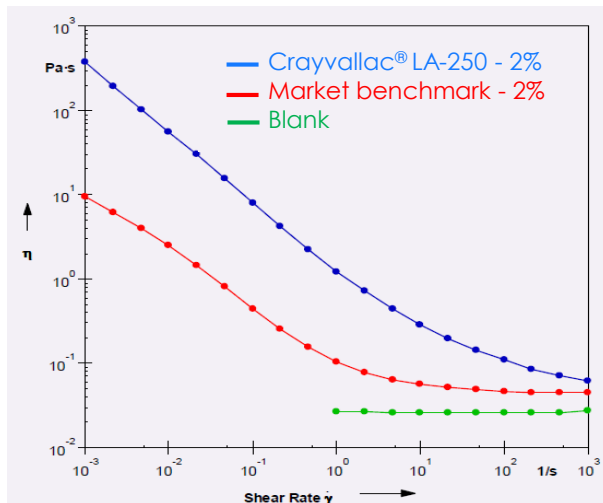
Crayvallac® LA-250 shows very **good sag resistance** properties controlled easily by the dosage

... Easy incorporation, post addition

Crayvallac® LA-250 is easily incorporated in formulations by **post-addition** under low shear rates



Shear-thinning...



Indeed, the **thixotropic index** conferred by **Crayvallac® LA-250** is very high, even at low dosages

Contact us to discover all **our solutions** for **Coatings**